

Updating the firmware of the HV3

1) Power on the HV3 and connect it with the PC using an USB-cable. It is important to **use the USB-port on the back side** of the HV3. **Do not use the front USB-port.** If there is another USB-cable connected to the front port of the HV3, then please disconnect it.

2) Go into the Device Manager of Windows. The HV3 will appear as “Arduino Due Programming Port”. You will find it either in the section “Ports (COM & LPT)” or in “other devices”. If it is visible in “Ports (COM & LPT)” then the necessary driver is already installed, and you can continue with step 3. If “Arduino Due Programming Port” is not visible, please go to step ‘a’ (see the next page of this document), install the driver and then come back to step 3

Please make sure that no other HV3 or any other device that uses an Arduini Due is connected to the PC. (e.g. RoentDek’s RM-6 or ATC1)

3) Double click on the file “update_firmware_HV3.bat”. A black window will open. If this program fails to work correctly, please use “update_firmware_HV3_alternative.bat” instead (this might be required on some older Windows-systems). At the end of the flash procedure (it will take some seconds), the output should look as in the following image:

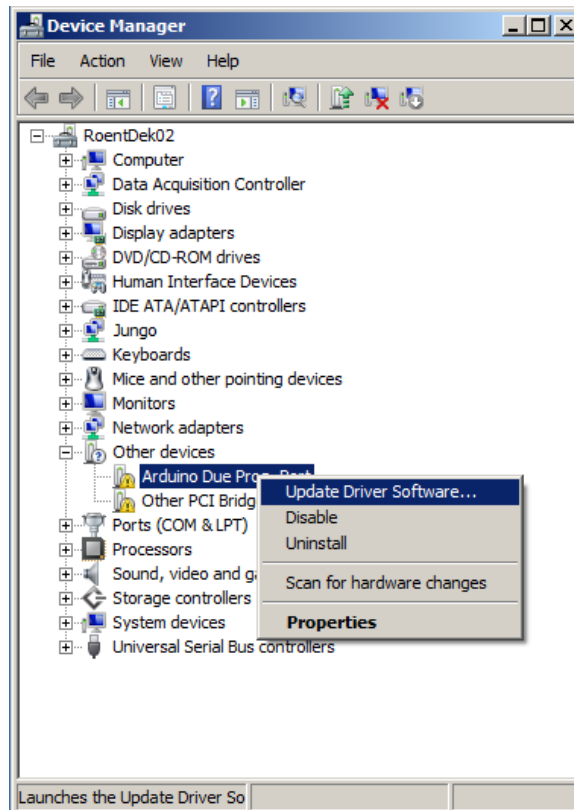
```
C:\WINDOWS\system32\cmd.exe
Arduino Due Programming Port found at COM5
Status for device COM5:
-----
Baud:          1200
Parity:         None
Data Bits:      8
Stop Bits:      1
Timeout:        OFF
XON/XOFF:       OFF
CTS handshaking: OFF
DSR handshaking: OFF
DSR sensitivity: OFF
DTR circuit:    ON
RTS circuit:    ON

Erase flash
Write 52880 bytes to flash
[=====] 100% (207/207 pages)
Set boot flash true
Device       : ATSAM3X8
Chip ID      : 285e0a60
Version      : v1.1 Dec 15 2010 19:25:04
Address      : 524288
Pages        : 2048
Page Size    : 256 bytes
Total Size   : 512KB
Planes       : 2
Lock Regions : 32
Locked       : none
Security     : false
Boot Flash   : true
CPU reset.
Press any key to continue . . .
```

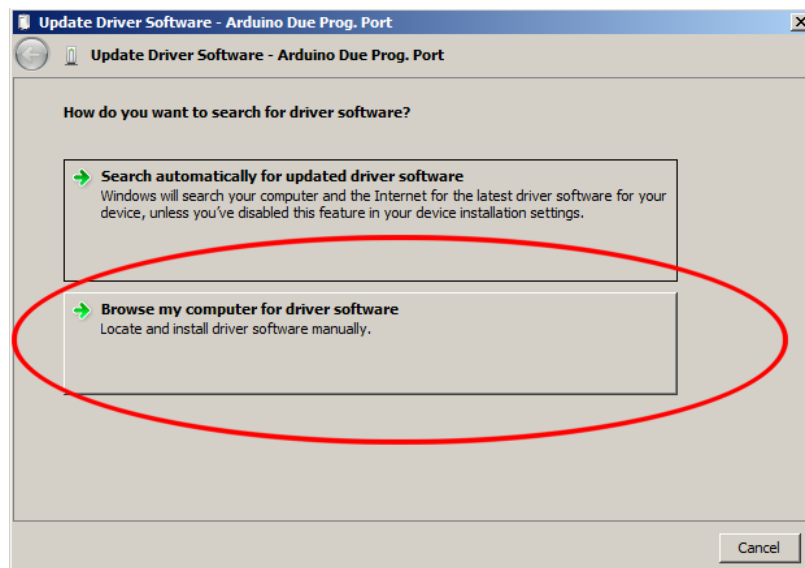
4) Disconnect the USB-cable from the back USB-port of the HV3. Done.

On some Windows-systems, the following steps may be required before the firmware can be installed:

- a) Right click on “Arduino Due Programming Port” and select “Update Driver Software”



- b) In the next window select “Browse my computer for driver software”.



5.3) point it to the “driver”-folder which is in the same folder as this document.
Now the driver will be installed. Please confirm all messages during the installation.
Please begin with continue with step 3.